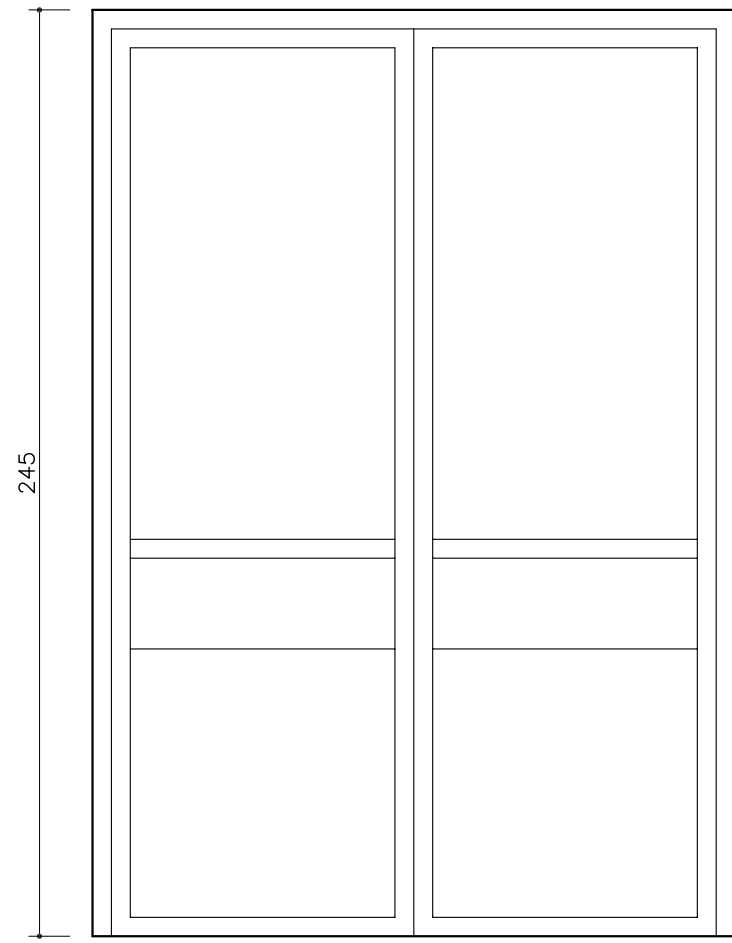
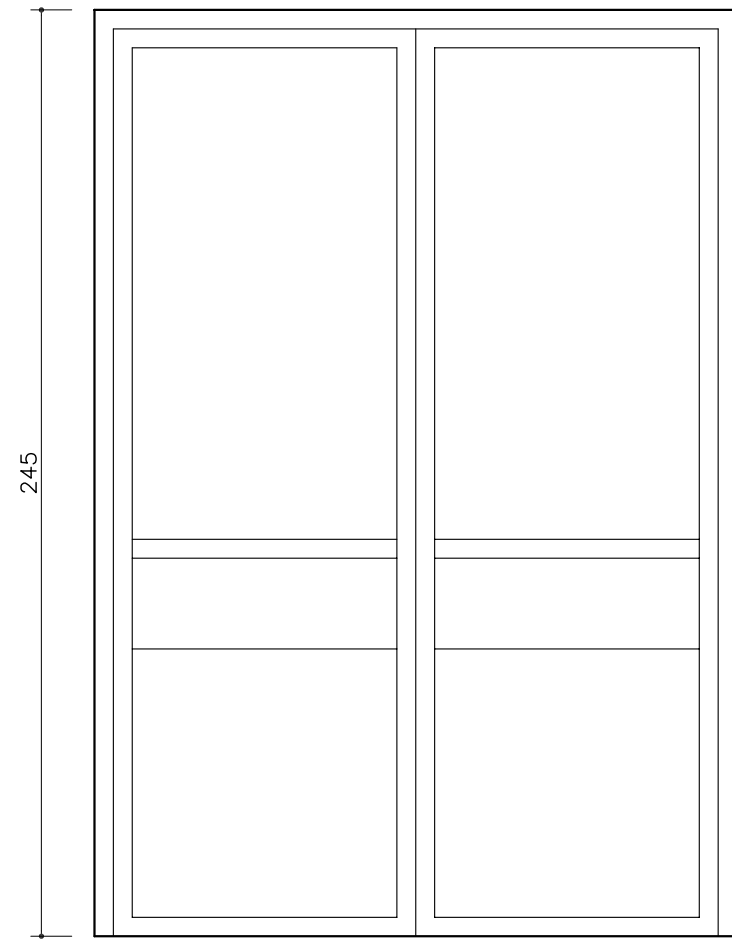


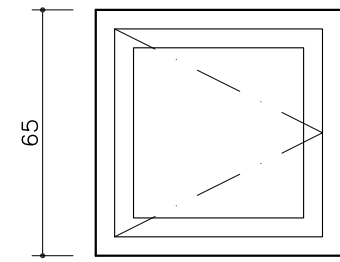
105
PC-1
1 Ud.



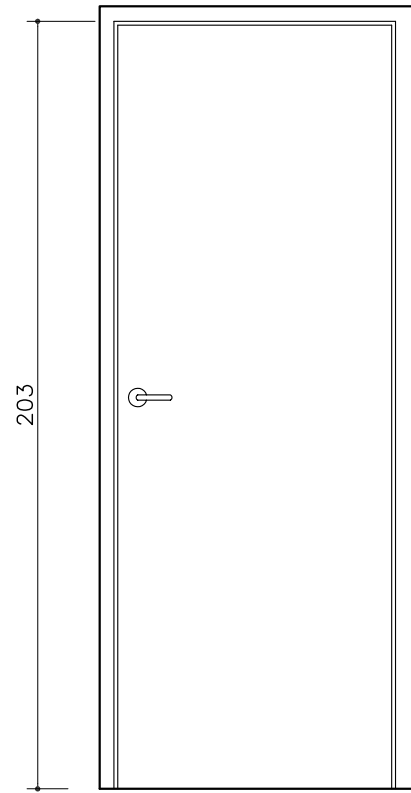
170
PA-1
1 Ud.



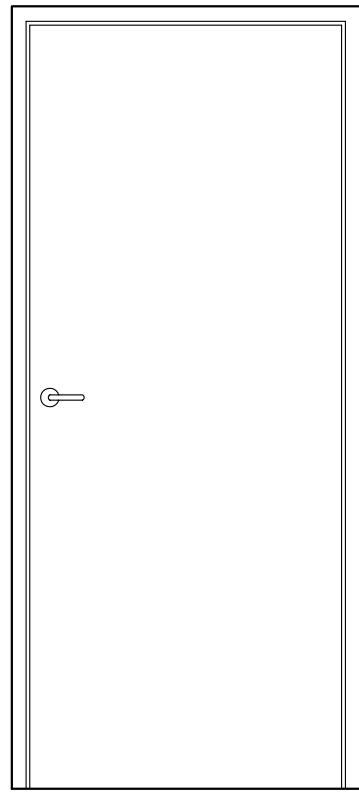
170
PA-2
2 Ud.



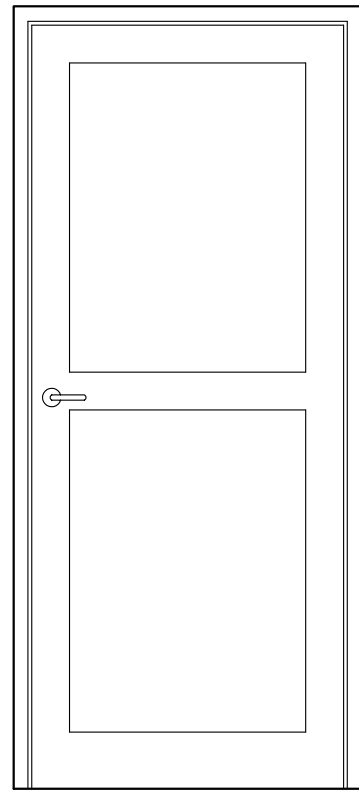
65
V-1
5 Ud.



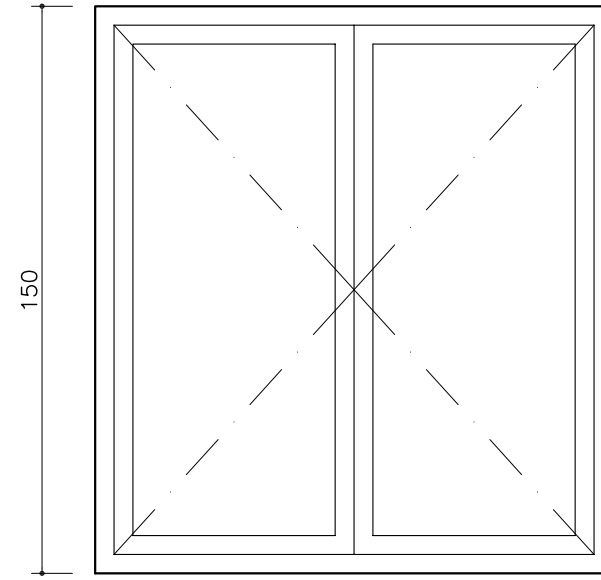
72,5
P-1
3 Ud.



82,5
P-2
9 Ud.



82,5
P-3
1 Ud.



137
V-2
4 Ud.



Ayuntamiento de Rincón de Soto
Proyecto Ejecución para Comedor Escolar

Carpintería

Arquitecto: Julián Miranda Blanco
Julio 2009

jm
Escala 1/20